



cad4ALL

Authorised Bricsys Partner

COMPANY PROFILE



BRICSCAD

Executive Summary

CAD4ALL was established in the year 2007 by Jody and Lisa Van Heerden, the birth of this new entity was brought about by the passion and desire to deliver a quality product and service to a market that is currently looking for alternative software design solutions.

Mission

Our mission is to be true to our name “CAD4ALL” by ensuring that every professional that is within the architecture, structural, design industry as well as all students from previously disadvantaged communities will gain access to our software and services.

We endeavour to ensure that our distinctive feature is the CAD4ALL commitment to professional and excellent service delivery to all of our clientele.

Vision

Our vision is to become one of the leading CAD software distributor's in Southern Africa. To increase our market share incrementally and to become one of the leading CAD resource and support centre's in South Africa.

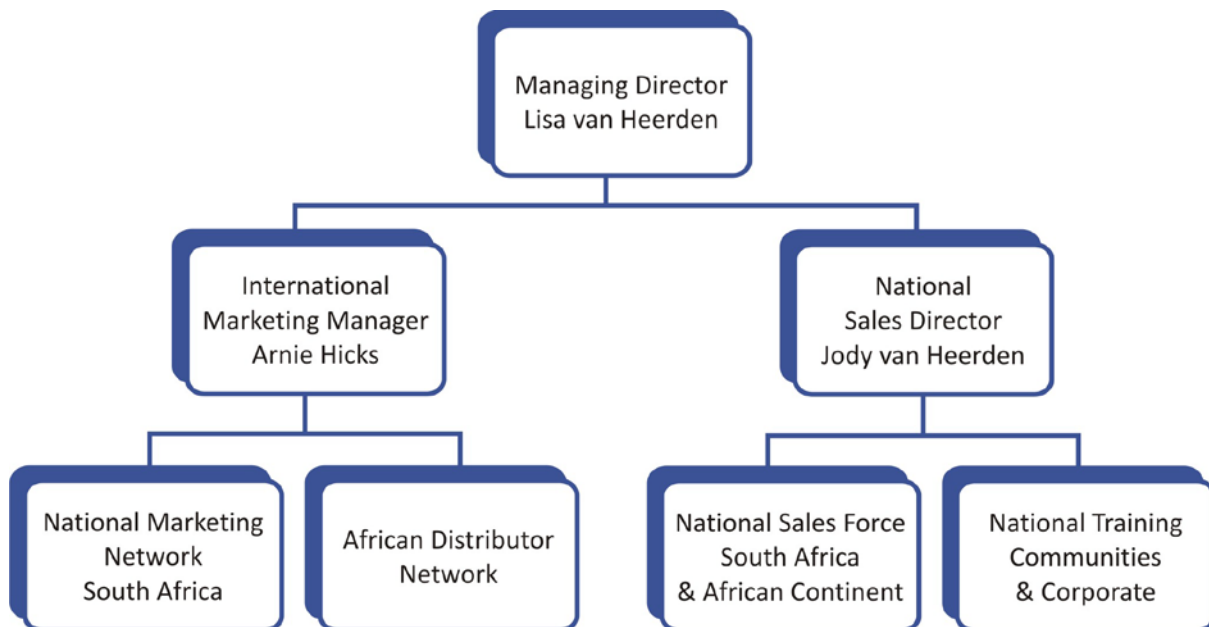
To always introduce a new and dynamic software intervention to the market place and to stay abreast and maintain our edge in the world of CAD software development into the future.

Organisational Summary

Owner / Managing Director

CAD4ALL was created by Jody and Lisa van Heerden, who has a passion for design and delivery of credible business enabling solutions. Jody and Lisa are firm leaders and has the ability to motivate and derive the best results from the CAD4ALL team.

Below is the organisational structure, highlighting the key positions within the company and the skills dedicated to ensuring that the business will be managed professionally.



Objectives for CAD4ALL

- To establish CAD4ALL in the South African market first
- To build a sustainable customer base
- To build CAD4ALL into a credible and recognisable brand
- To be socially relevant by having an effective skills development program for previously disadvantaged individuals and communities.

CAD4ALL Training Academy

Having a credible product with a fantastic user track record can only be achieved when a comprehensive training program is in place that supports the product.

Our training academy will be servicing the entire design industry and catering for all the individual markets that utilise CAD software. The training program is designed and content approved by all the regulatory, statutory and accreditation authorities within South Africa. Our training programs will ensure that all candidates graduate with a certificate of competence and their certification will be recognised by and approved by all the necessary bodies.

Our training academy has national representation and will be located in centres that are accessible for students and companies.

We will have student support finance available for students who cannot afford the fees and this will be the responsibility of our CAD4ALL financial services division.

Students who graduate and do not have any formal employment, the academy will source employment and ensure that they are placed in temporary and permanent positions, as the market requires. Our correspondence course will ensure that students who are not close to cities will still have an opportunity to study through distance learning.

Our lecturers are qualified individuals with more than three to five years experience of lecturing within the CAD user environment.

Therefore all our students will be receiving first world training and will be skilled to enter into the job market immediately after certification.

Our training programs will have a refresher course for users who have received training at other institutions but would like to sharpen their skills and speed when utilising the software.

The most important factor will be the affordability factor of the training program, we will ensure that our training solution is the most cost effective in the market place on a national basis.

Our training program will be exported to the African continent as it must fulfil our strategic approach when entering into the African market. The added value of the training academy will be the creation of jobs.

CAD4ALL Client base

This is our existing client base currently which is expanding on a daily basis.
Feel free to request our updated client data base.

4 Design	Consulteam	nDawonye Networks
52 Engineering	Conveytrac	New Environment (Gautrain)
Acepak Automatics	Creative Irons	Newtect
Acsa (Airports Company South Africa)	DM Agencies	Nicola Irving Architect
Adaptive Resource Engineers	DHK Thinkspace	Open Studio Architects
African Roof Trusses	Dihlase Consulting Engineers	Paballo Engineering Services
Afroteq Facilities Management	Eliakim Development Projects	Petro Image
Air Options	Engen Petroleum	Power Construction Group
AJM Engineering Services	ENI	Pressurecad Draughting
Allan Morran Design	First Plan	QC Solutions
All-Arc Studio	FSI Services	QDP Lighting & Electrical Designs
Aluplan Architectural	Geldenhuys & Jooste Architects	Reg Whittaker Architects
Aluminium	Goldbat	Robert Johnson Architect and Associates
Ananeo Specialised Engineering	HG Molenaar and Co.	SA Five Engineering
Andre Kleynhans Living	H.J Engineering Services	Sennah Handling Systems
Apex Process	Hudu Design	Shutcor Engineering
Arch Design	Hugo Hamity Architects	Simon Lees Associates
ASF Fencing & Construction	Intramech	Siyazi Transportation Services
ASG Texture Designs	Jabez Interiors & Shopfitters	Limpopo
AVNA	John Deetlefs Land Surveyors	Smuts Surveying Services
Babamia Consultants	Kenyuka Africa	Stainless Fabrication
Bester & Moloi Surveys	L&D Enterprises	Subtech
BEKA	Light Kinetics	Tania Glavas Architects
Bonadei Architects	Madan Singh and Associates	TDPM
Cadhouse Design Enterprises	MA Architects	The BDC partnership
Calibre Engineering	MAJ Projects	The plan Man
Chris de Hart Architects	Marine Data Solutions	Theron Broers
Christopher Thompson Partnership	MET	Unidraft
Civic Automation	Mervin Gillian	Usiba Art
Claasen Auret Inc.	MH Babamia Consultants	Virtual Consulting Engineers
Clinton & Evans Architects	Modern Spaces	Whip Fire
Combat Fire	MTN Sciencecentre	W&L Consulting
	MTO Forestry	World Focus
	Multi Consult	



Technical Support

CAD4ALL Software has a technical support team in place.

We offer twenty (12) hour technical support, this is determined within three hemispheres:

1. The hemisphere of telephonic support, we support all customers telephonically and should the problem be more complex than anticipated or cannot be resolved then the technical is escalated to the second hemisphere.
2. The second hemisphere of support is onsite support at the customer/s premises and the technicians/engineers will resolve the problem and find a solution to ensure that the customer do not experience lengthy down time.
3. The third hemisphere is when a client has a specific need for support, in the event of overtime or weekend working, and then the client will reserve a number of hours for support for the duration of the working time. Technical support on-call.

BEE ACCREDITATION

CAD4ALL Software is a BEE owned business with a female CEO

Our BEE certificate attached.....



Hereby Certifies that

CAD4ALL SOFTWARE CC

Office 120 Ipic Centre Cnr Amandel And, Botelary Road Kuilsriver, 7580

Registration Number: 2008/219164/23

VAT Number: 4510251152

Qualifies as an Exempt Micro Enterprise (EME)
With an automatic BEE recognition reflected below:

BEE Status:	Level 3	BEE Recognition:	110%
Black Ownership	100%	BEE Category:	EME
Black Woman Ownership:	100%	Value Add Supplier:	yes

110% of what your company spends with this company can be counted as
BEE spend.

Issue Date: 09-Apr-09

Expiry Date: 08-Apr-10

A handwritten signature in black ink, appearing to be 'S. van Niekerk', is written over a horizontal line.

Director

Wiseguys Business Consultants & Accountants Inc.

This BEE Certificate is issued in accordance with the exemption paragraph 4 of Code 000, Statement 000 and does not represent a BEE verification. This company has provided documentation as proof of its exemption. Wiseguys Business Consultants Inc. retains copies of all documents presented and has issued this certificate in their place.

BRICSYS



APPLICATIONS FOR BRICSCAD

AEC



Architecturals

Architecturals is the only 3D modeler for DWG that offers real connectivity between all the elements.



ArmaCAD

ArmaCAD is a powerful software used to design reinforcement drawings, with automatic bar schedule generation.



CAD Decor

CAD Decor is a sophisticated software tool for bathroom design as well as for any room in a home where ceramic tiles are used.



CP-System Architectural

CP-System Architectural is a powerful application - running on CAD core-software - to design architectural drawings.



CRANE MANAGER / ToM

CRANIMATION is a software to organize and manage the planning of cranes on your building site.



FOR CAD

FOR CAD is software for the design of any type of form works



FloorCAD and Tbeams

A layout , design and production suite for precast and prestressed concrete flooring manufacturers



Kemper Dendrit CAD

Software for graphic engineering drawings and hydraulic calculations of network systems regarding drinking water, waste water and heating pipelines.



LandARCH 2009 Professional Edition

LandARCH Professional Edition is the integrated Bricscad add-on solution for external architecture, landscape design and irrigation.



Land F/X

Professional DWG CAD software for Landscape Architectural design and production documents: Planting, Concept, Irrigation, Details, SketchUp Connection & more.



Trazar

Trazar is an intelligent solution for the Architectural, Engineering and Construction Industry.



CIVIL



Civil Simulate

Civil Simulate is a powerful 3D interactive simulation tool providing an effective solution to the challenge of turning civil engineering design into 3D highly



CivilCAD 2008

CivilCAD2008 offers surveying, road construction and design tools, water engineering features, land volumes calculations and real time 3D simulation.



TCP-MDT Professional

MDT is a complete solution for Surveying and Civil Engineering projects.



TCP-MDT Standard

MDT is a powerful and easy to use software for working with surveys, digital terrain models, contours, horizontal alignments, cross-sections and volumes.



TCP-MDT Surveying

With the Surveying module for TCP-MDT the points from total station measurements can be computed, and also perform coordinate transformations.



TopoStudio

Customizes Bricscad for land surveying professionals looking for a fast, simple, easy to learn software. An efficient solution for daily problems.

DATA EXCHANGE (Part 1)



3DM Export for Bricscad

Rhinoceros 3DM file export plug-in for Bricscad



3DM Import for Bricscad

Rhinoceros 3DM file import plug-in for Bricscad



3DS Export for Bricscad

3D Studio 3DS file export plug-in for Bricscad



3DS Import for Bricscad

3D Studio 3DS file import plug-in for Bricscad



IGES Import for Bricscad

IGES file import plug-in for Bricscad



NC Import for Bricscad

Numeric Control (NC) program file import plug-in for Bricscad



OBJ Export for Bricscad

Alias Wavefront OBJ file export plug-in for Bricscad



OBJ Import for Bricscad

Alias Wavefront OBJ file import plug-in for Bricscad



DATA EXCHANGE (Part 1)



PIX Import for Bricscad
Dr. Picza (.pix) file import plug-in for Bricscad



PLT Export for Bricscad
Plot PLT file export plug-in for Bricscad



PLT Import for Bricscad
Plot PLT file import plug-in for Bricscad



Point Cloud for Bricscad
Reverse engineering plug-in for Bricscad



Points Export for Bricscad
A Point Text file export plug-in for Bricscad



Points Import for Bricscad
Point Text file import plug-in for Bricscad



SKP Export for Bricscad
SketchUp SKP file export plug-in for Bricscad



SKP Import for Bricscad
SketchUp SKP file import plug-in for Bricscad



STEP Import for Bricscad
STEP file import plug-in for Bricscad



STL Export for Bricscad
Stereolithography STL file export plug-in for Bricscad



STL Import for Bricscad
Stereolithography STL file import plug-in for Bricscad



TerrainCAD for Bricscad
Terrain modeling plug-in for Bricscad



VTK Export for Bricscad
Visualization Toolkit (.vtk) file export plug-in for Bricscad



VTK Import for Bricscad
Visualization Toolkit VTK file import plug-in for Bricscad

OTHER



SmartBlocks_in-axis
SmartBlocks is the set of reactor based "thinking" tools. Program inserts special objects into drawing with rules, how these objects must react to the situation



XPAC Open Cut Coal
A simple, easy to use, design and reserving system for open-cut coal deposits.



XPAC Underground Coal
A specialist software application for underground coal mining operations for mine schedule management



ELECTRICAL



CP-System Electrical

CP-System Electrical is a powerful application to design lighting, low-tension, power plant, aerial, alarm and other electrical installations



ELsoftCAD

ELsoftCAD is a powerful application that simplifies designing of any electrical.



QC Pro

QC Pro is an electrical CAD system that streamlines the process of designing and structuring electrical projects.

GIS, SURVEY AND MAPPING



FlashMNT

FlashMNT is a tool that allows the creation of Digital Terrain Models (DTM) and 3D computations.



FlashPoints 2.0

FlashPoints is a tool for creating and managing point Groups (topographic points for example).



GeoTools

GeoTools helps super-charge your Bricscad productivity and output.

HVAC



CP-System HVAC

CP-System HVAC is a powerful application - running on Bricscad - to design technical building equipment.



Mech-Q HVAC Ducting Module

Mech-Q HVAC Ducting Module (MHVAC) consists of regular, round and flat oval duct allowing the user generate complex HVAC ducting layouts with ease. MHVAC design software adds insulation as required and bends design is fully customizable. This module also includes the powerful Straight/Bend duct utility with the versatile - Duct of the Run function (2D only). (Includes Bill of Materials)



GENERAL TOOLS



ArchSoft

ArchSoft is a 2D application program designed to greatly speed up the production of architectural construction (working) drawings – both Metric and Imperial



Efficad Tools

Efficad Tools is a set of ease-to-use additional tools which allows you to increase the drawing speed by automating of the often repeating 2D drawing operations



KaliBronek

KaliBronek is the powerful tool for raster data transformation.



RockAUTO™

RockAUTO™ productivity CAD design/drafting package that is simple to use and easily configured to your office standards.



TangenTools

TangenTools is a freeware Bricscad/AutoCAD plug-in. Insert .dwg blocks from the library or parametric stairs, doors, windows or steel profiles. Simple and free!



ToolPac

ToolPac is a massive collection of productivity tools that range across a wide spectrum.



Word2CAD

Word2CAD overcomes the limits and problems associated with OLE placement of Word documents inside Bricscad Pro.



XL2CAD

XL2CAD overcomes the limits and problems associated with OLE placement of Excel spreadsheets inside Bricscad Pro.



Aide PDF to DXF Converter

Aide PDF to DXF Converter is a powerful windows program that will help you convert your PDF files to usable and editable DXF files quickly and easily.

MECH-Q P & ID

This module allows you to build and maintain a library of mechanical symbols to be used in Pipe and Instrumentation Diagram (P&ID) drawings.

MECH-Q Piping

The Piping module is an easy to use full 2D & 3D piping package. Includes a comprehensive range of pipe, fittings, flanges and valves: Welded, flanged, threaded, ductile & cast iron, Victaulic stainless, PVC...with auto-BOM. Other utilities include: Isometric piping, P&ID, fabricated pipe, hangers, clamps, Vessels, pumps...

MECH-Q Plumbing Symbols

The module covers a large range of plumbing symbols and allows you to generate plumbing drawings with BOM data. The applications allows you to add new symbols of your choice and gives you full control of all the symbols sizes, layers, fonts and data associated with the symbols used.



MECHANICAL



CP-System Mechanical

CP-System Mechanics is a powerful application - running on Bricscad - to create mechanical and structural projects.



IntelliCAM

IntelliCAM is a Cad/Cam system to suit all "pockets".

MECH-Q

Mech-Q Mechanical

The symbol library includes a large section of fasteners, bearings & housings, gears, material handling equipment, shafts utility and more. This mechanical software supports both Metric and English (Imperial) units. Most of the Mechanical Symbols are available in either 2D or 3D solids. (Includes Bill of Materials)



Plate 'n' Sheet Professional

Plate 'n' Sheet Professional Software unfolds a wide range of the steel plate and sheetmetal shapes commonly used in the sheetmetal, piping and steel fabrication industries. It is both fast and easy to use.

RENDERING



GAMMA-RAY

GAMMA-RAY – Rendering of the Next Generation – is a rendering software for every CAD user to produce renderings in a short time.

STRUCTURAL



PON CAD

PONCAD allows a drastic reduction in design times and precise drafting



SteelPLUS Structural Shapes

SteelPLUS™ Structural Shapes includes W-Shapes, channels, single/double angles, square & rectangular tubing, pipes, M, S, HP shapes and tees.

MECH-Q

Mech-Q Structural

Mech-Q Structural includes steel detailing utilities for beam-connections, stairs, ladder, bracing, hand railings, frames, welding symbols, a beam designer and much more. Many of these tools include auto-dimensioning to fabrication detail and includes AOM with weighted BOM. Draw in both 2D and 3D, and the structural steel shape routine also supporting data listing with a pick & match option. (Includes Bill of Materials)